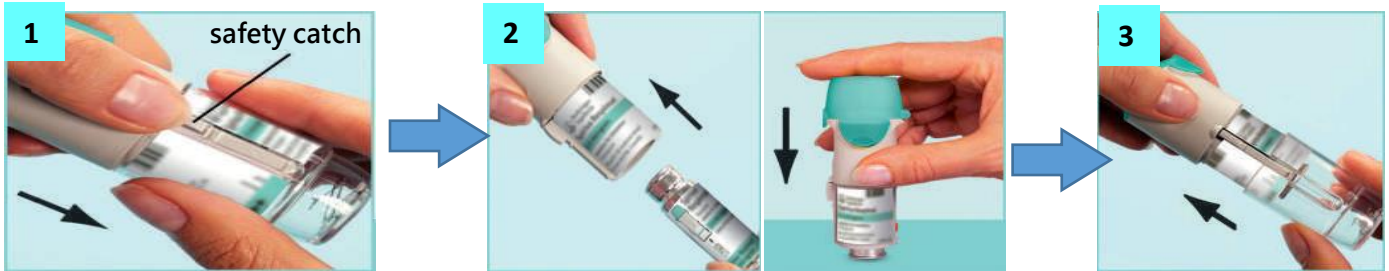


# Instruction of Spiriva Respimat

- Generic Name: Tiotropium
- Indication: Maintenance treatment of patients with Chronic Obstructive Pulmonary Disease (including chronic bronchitis and emphysema).
- Dosing: Inhale 2 puffs once daily from the RESPIMAT inhaler at the same time of the day.



## Setting cartridge (before first-use)



**1** Keep the cap closed. Press the safety catch while firmly pulling off the clear base with your other hand.

**2** Insert the narrow end of the cartridge into the inhaler.

**3** Put the clear base back into place until it clicks.

Do not remove the clear base or the cartridge after it has been put together.

## Prepare for first-use

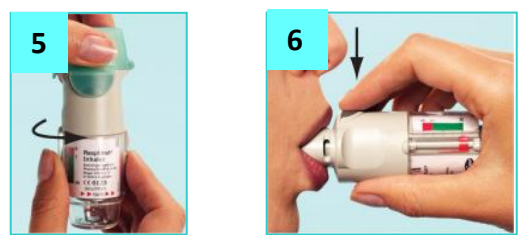


**4** Keep the cap closed. Turn the clear base in the direction of the arrows on the label until it clicks (half a turn).

Open the cap until it snaps fully open.

Point the inhaler toward the ground. Press the dose-release button.

## Daily use after first-use



**5** Keep the cap closed. Turn the clear base in the direction of the arrows until it clicks (half a turn).

**6** Breathe out completely. With the inhaler in your mouth, without covering the air vents, press the dose-release button and breathe in deeply. Hold your breath for 5~10 seconds.

First-time use: After a mist is seen, repeat steps 4 to 6 three times.

Repeat the steps for a total dose of 2 puffs.

## When to get a new Spiriva Respimat



Empty

Full

When the dose indicator enters the red area of the scale you need to get a new prescription; there is approximately medication for 7 days left (14 puffs).

Once the dose indicator reaches the end of the red scale, your Spiriva Respimat locks automatically – no more doses can be released.

